

CENTURY STYLE



CATALOGUE 2023

WWW.CENTURYSTYLE.US

469-258-4402

ADDRESS: 28 DECKER CT, WYLIE, TEXAS, 75098



ELEVATING WARDROBES WITH TIMELESS QUALITY

INTRODUCING CENTURY STYLE APPAREL:

WELCOME TO CENTURY STYLE APPAREL, WHERE TIMELESS ELEGANCE MEETS UNPARALLELED QUALITY. WE TAKE PRIDE IN REDEFINING THE CONCEPT OF BASIC AND BLANK APPAREL, TURNING THEM INTO WARDROBE AND PRINTING ESSENTIALS THAT STAND THE TEST OF TIME.

CRAFTSMANSHIP BEYOND COMPARE:

QUALITY IS AT THE HEART OF EVERYTHING WE DO. OUR DEDICATION TO EXCEPTIONAL CRAFTSMANSHIP IS EVIDENT IN EVERY STITCH, EVERY SEAM, AND EVERY FINISH, REFLECTING OUR UNWAVERING COMMITMENT TO DELIVERING THE HIGHEST QUALITY.

BLANK CANVAS FOR SELF-EXPRESSION:

OUR APPAREL SERVES AS A BLANK CANVAS, ALLOWING YOU TO EXPRESS YOURSELF FREELY. WHETHER YOU'RE LOOKING FOR THE PERFECT BACKDROP TO SHOWCASE YOUR CREATIVITY THROUGH CUSTOMIZATION OR SEEKING AN UNDERSTATED YET SOPHISTICATED LOOK, CENTURY STYLE APPAREL PROVIDES THE CANVAS UPON WHICH YOU CAN PAINT YOUR PERSONAL NARRATIVE.

WHO WE ARE FOR:

CENTURY STYLE APPAREL IS FOR RETAILERS AND PRINTERS WHO VALUE QUALITY, VERSATILITY AND A BARGAIN. WHETHER YOU'RE A PRINTER WORKING FOR CORPORATE CLIENTS OR SOMEONE WORKING OUT OF THEIR HOME, OUR COLLECTION IS DESIGNED TO RESONATE WITH YOU.

JOIN THE CENTURY STYLE EXPERIENCE:

DISCOVER THE ART OF REFINED SIMPLICITY WITH CENTURY STYLE APPAREL. ELEVATE YOUR EVERYDAY WARDROBE WITH OUR METICULOUSLY CRAFTED BASIC AND BLANK APPAREL, AND EXPERIENCE THE FUSION OF STYLE AND SUBSTANCE LIKE NEVER BEFORE.

COME, BE A PART OF THE CENTURY STYLE EXPERIENCE. DRESS IN QUALITY THAT ECHOES THROUGH THE AGES.



PRIVATE LABEL PROGRAM

Century Style Apparel extends a personalized invitation to visionaries seeking to infuse their brand with a unique style or color. Through our private label production program, we grant you the power to breathe life into your creative aspirations. Our devoted team works in harmony with your creative minds to conceptualize and actualize a finished product that not only meets but exceeds your wildest expectations.

Just as your brand possesses its own individuality, the garments it adorns should reflect that essence. Our pride lies in meticulously crafting apparel that serves as a living embodiment of your brand's spirit and values.

Make our Styles your Own! We will put your Brand on Our Signature Styles,
Delivery Time: 3 months to 4 months.

Want our Magical Touch on one of your Designs!
Custom Design: 4 weeks Reserved for Quotation and Sample Approval,
Delivery Time: 3 to 4 months After Approval.

Minimum Order Quantity:
MOQ depends on the customization and styling for the Garment of your
Choice.

Email us your queries
Sales@centurystyle.us

TABLE OF CONTENT

JERSEY COLLECTION

MEN'S PREMIUM T-SHIRT	STYLE 101	08
PREMIUM CVC T-SHIRT	STYLE 101 CVC	09
MEN'S VALUE T-SHIRT	STYLE 201	10
MEN'S V-NECK T-SHIRT	STYLE 301	11
LONG SLEEVE T-SHIRT	STYLE 401	12
HEAVY WEIGHT T-SHIRT	STYLE 101 HW	13
HEAVY WEIGHT LONG SLEEVE T-SHIRT	STYLE 401 HW	14
MEN'S TANK TOP	STYLE 4601	15
WOMEN'S PREMIUM T-SHIRT	STYLE 5001	16
WOMEN'S PREMIUM V-NECK T-SHIRT	STYLE 5002	17
YOUTH PREMIUM T-SHIRT	STYLE 3601	18

FLEECE COLLECTION

PREMIUM FLEECE HOODIE	STYLE 6011	20
ADULT BASIC HOODIE	STYLE 6001	21
FLEECE VALUE HOODIE	STYLE R7001	22
ADULT ZIPPER HOODIE	STYLE 6002	23
ADULT CREWNECK	STYLE 6003	24
ADULT COMFORT JOGGER	STYLE 6601	25
WOMEN'S CROPPED HOODIE	STYLE 5050	26

YOUTH'S PICK

YOUTH HOODIE	STYLE 3001	28
YOUTH ZIPPER HOODIE	STYLE 3002	29
YOUTH JOGGER	STYLE 3006	30



JERSEY
COLLECTION





STYLE 101



MEN'S PREMIUM T-SHIRT

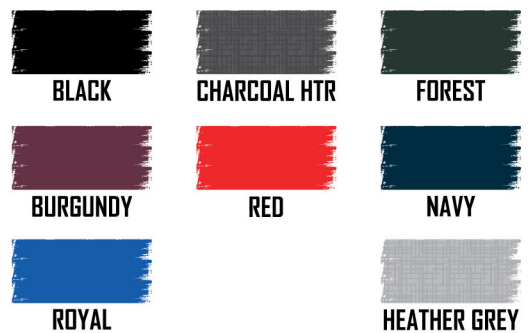
PRODUCT DETAILS

- SIDE SEAM
- ENZYME WASHED
- SHOULDER TAPING
- TEAR AWAY LABEL
- RETAIL FIT
- 30 SINGLE 4.3 OZ FABRIC
- 145 GSM
- 100% RING-SPUN COMBED COTTON
- HEATHERS: 60% RING-SPUN COMBED COTTON / 40% POLY
- ORIGIN: PAKISTAN

SIZES



COLORS AVAILABLE





JERSEY COLLECTION

STYLE 101CVC PREMIUM CVC T-SHIRT



PRODUCT DETAILS

- SIDE SEAM
- ENZYME WASHED
- SHOULDER TAPING
- TEAR AWAY LABEL
- RETAIL FIT
- 30 SINGLE 4.3 OZ FABRIC
- 145 GSM
- 60% RING-SPUN COMBED COTTON / 40% POLY
- ORIGIN: PAKISTAN

SIZES



COLORS AVAILABLE



BLACK HTR



CHARCOAL HTR



SLATE HTR



HEATHER GREY



NAVY HTR



STYLE 201

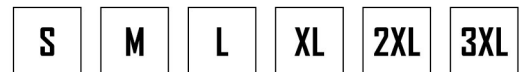


MEN'S VALUE T-SHIRT

PRODUCT DETAILS

- TUBULAR
- ENZYME WASHED
- SHOULDER TAPING
- TEAR AWAY LABEL
- RETAIL FIT
- 30 SINGLE 4.3 OZ / 145 GSM FABRIC
- 100% RING-SPUN COMBED COTTON
- HEATHERS: 60% RING-SPUN COMBED COTTON / 40% POLY
- LIGHT HEATHERS: 90% RING-SPUN COMBED COTTON / 10% POLY
- ORIGIN: PAKISTAN

SIZES



COLORS AVAILABLE





STYLE 301



MEN'S V-NECK T-SHIRT

PRODUCT DETAILS

- TUBULAR
- ENZYME WASHED
- SHOULDER TAPING
- TEAR AWAY LABEL
- RETAIL FIT
- 30 SINGLE 4.3 OZ FABRIC
- 145 GSM
- 100% RING-SPUN COMBED COTTON
- HEATHERS: 60% RING-SPUN COMBED COTTON / 40% POLY
- LIGHT HEATHERS: 90% RING-SPUN COMBED COTTON / 10% POLY
- ORIGIN: PAKISTAN

SIZES



COLORS AVAILABLE





STYLE 401

LONG SLEEVE T-SHIRT



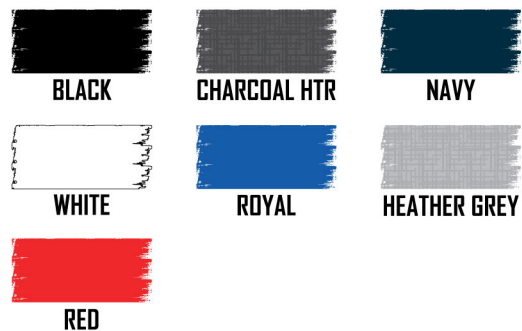
PRODUCT DETAILS

- TUBULAR
- ENZYME WASHED
- SHOULDER TAPING
- TEAR AWAY LABEL
- RETAIL FIT
- 30 SINGLE 4.3 OZ FABRIC
- 145 GSM
- 100% RING-SPUN COMBED COTTON
- HEATHERS: 60% RING-SPUN COMBED COTTON / 40% POLY
- LIGHT HEATHERS: 90% RING-SPUN COMBED COTTON / 10% POLY
- ORIGIN: PAKISTAN

SIZES



COLORS AVAILABLE





STYLE 101HW

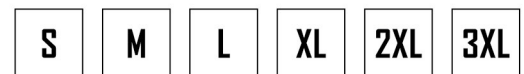
HEAVY WEIGHT T-SHIRT



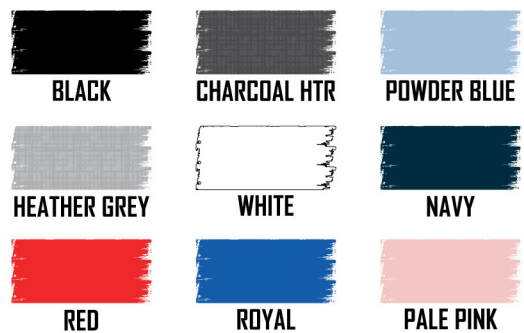
PRODUCT DETAILS

- TUBULAR
- 1" RIB COLLAR
- SHOULDER TAPING
- TEAR AWAY LABEL
- 5.5 OZ / 185 GSM FABRIC
- 100% RING-SPUN COMBED COTTON
- HEATHERS: 60% RING-SPUN COMBED COTTON / 40% POLY
- LIGHT HEATHERS: 90% RING-SPUN COMBED COTTON / 10% POLY
- ORIGIN: PAKISTAN

SIZES



COLORS AVAILABLE





STYLE 401HW

HEAVY WEIGHT LONG SLEEVE T-SHIRT



PRODUCT DETAILS

- TUBULAR
- 1" COLLAR RIB
- SHOULDER TAPING
- TEAR AWAY LABEL
- 20 SINGLE 5.5 OZ / 185 GSM FABRIC
- 100% RING-SPUN COMBED COTTON
- HEATHERS: 60% RING-SPUN COMBED COTTON / 40% POLY
- LIGHT HEATHERS: 90% RING-SPUN COMBED COTTON / 10% POLY
- ORIGIN: PAKISTAN

SIZES



COLORS AVAILABLE





JERSEY COLLECTION

STYLE 4601



MEN'S TANK TOP

PRODUCT DETAILS

- TUBULAR
- SHOULDER TAPING
- TEAR AWAY LABEL
- 4.3 OZ FABRIC, 100% RING-SPUN COMBED COTTON
- LIGHT HEATHERS 90% RING-SPUN COMBED COTTON / 10% POLY
- ORIGIN: PAKISTAN

SIZES



COLORS AVAILABLE



BLACK



WHITE



HEATHER GREY



STYLE 5001



WOMEN'S PREMIUM T-SHIRT

PRODUCT DETAILS

- SIDE-SEAM
- ENZYME WASHED
- SHOULDER TAPING
- TEAR AWAY LABEL
- TRUE TO SIZE
- 30 SINGLE 4.3 OZ FABRIC
- 145 GSM
- 100% RING-SPUN COMBED COTTON
- HEATHERS: 60% RING-SPUN COMBED COTTON / 40% POLY
- LIGHT HEATHERS: 90% RING-SPUN COMBED COTTON / 10% POLY
- ORIGIN: PAKISTAN

SIZES



COLORS AVAILABLE





JERSEY COLLECTION

STYLE 5002

WOMEN'S PREMIUM V-NECK T-SHIRT

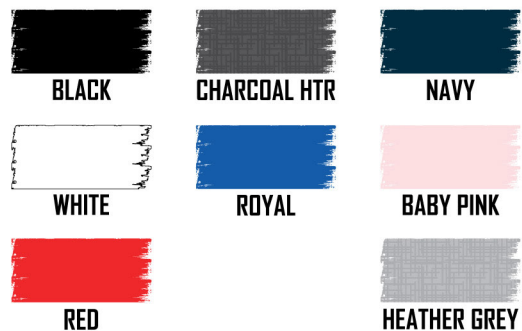
PRODUCT DETAILS

- SIDE-SEAM
- ENZYME WASHED
- SHOULDER TAPING
- TEAR AWAY LABEL
- TRUE TO SIZE
- 30 SINGLE 4.3 OZ FABRIC
- 145 GSM
- 100% RING-SPUN COMBED COTTON
- HEATHERS: 60% RING-SPUN COMBED COTTON / 40% POLY
- LIGHT HEATHERS: 90% RING-SPUN COMBED COTTON / 10% POLY
- ORIGIN: PAKISTAN

SIZES



COLORS AVAILABLE





STYLE 3601

YOUTH PREMIUM T-SHIRT

PRODUCT DETAILS

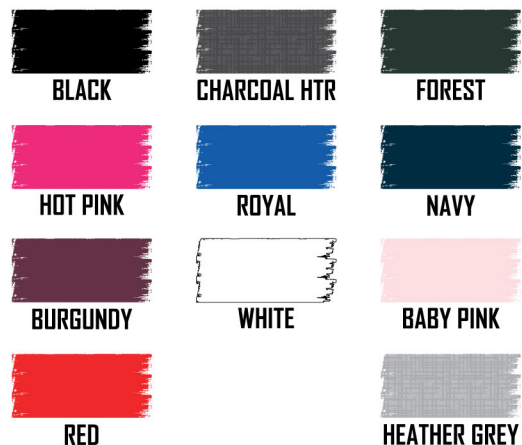
- SIDE SEAM
- ENZYME WASHED
- SHOULDER TAPING
- TEAR AWAY LABEL
- RETAIL FIT
- 30 SINGLE 4.3 OZ FABRIC
- 145 GSM
- 100% RING-SPUN COMBED COTTON
- HEATHERS: 60% RING-SPUN COMBED COTTON / 40% POLY
- LIGHT HEATHERS: 90% RING-SPUN COMBED COTTON / 10% POLY
- ORIGIN: PAKISTAN

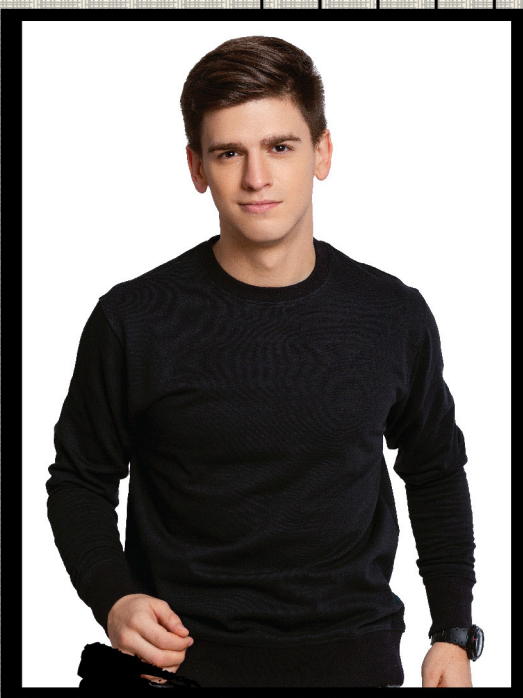


SIZES



COLORS AVAILABLE





FLEECE
COLLECTION





FLEECE COLLECTION

STYLE 6011



PREMIUM FLEECE HOODIE

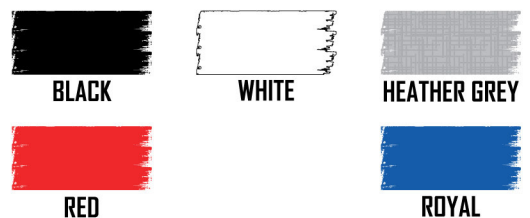
PRODUCT DETAILS

- 3 END FLEECE
- 2 PANEL HOODIE
- 1/2 MOON NECK PATCH FOR RELABELING
- KANGAROO POCKET
- SHOELACE DRAWCORD
- TEAR AWAY LABEL
- 70% COTTON / 30% POLY RING SPUN YARN
- 8.4 OZ / 285 GSM FABRIC
- ORIGIN: PAKISTAN

SIZES



COLORS AVAILABLE





STYLE 6001

ADULT BASIC HOODIE



PRODUCT DETAILS

- MID-WEIGHT FLEECE
- 7.8 OZ / 270 GSM FABRIC
- MATCHING FLAT DRAWCORD
- TEAR AWAY LABEL
- 80% RING-SPUN COTTON / 20% POLY
- KANGAROO POCKET
- 3 PANEL HOODIE
- 1/2 MOON NECK PATCH FOR RELABELING
- ORIGIN: PAKISTAN

SIZES



COLORS AVAILABLE





STYLE R7001

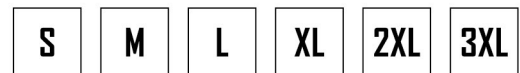
FLEECE VALUE HOODIE



PRODUCT DETAILS

- MID-WEIGHT FLEECE
- 7.8 OZ / 270 GSM FABRIC
- MATCHING FLAT DRAWCORD
- TEAR AWAY LABEL
- 52% RING-SPUN COTTON / 48% RECYCLED POLY
- ECO FRIENDLY
- SUPERIOR PRINTABILITY
- KANGAROO POCKET
- 2 PANEL HOODIE
- 1/2 MOON NECK PATCH FOR RELABELING
- ORIGIN: PAKISTAN

SIZES



COLORS AVAILABLE



BLACK



CHARCOAL HTR



NAVY



CREAM HTR



HEATHER GREY



STYLE 6002

ADULT ZIPPER HOODIE

PRODUCT DETAILS

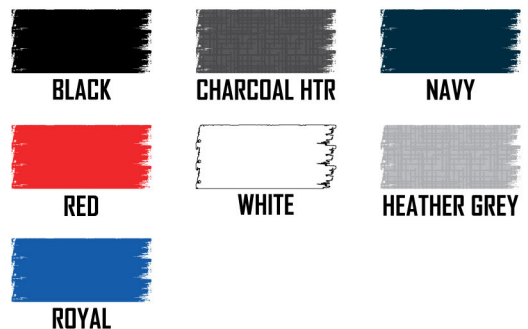
- MID-WEIGHT FLEECE
- 7.8 OZ / 270 GSM FABRIC
- MATCHING FLAT DRAWCORD AND ZIPPER
- TEAR AWAY LABEL
- 80% RING-SPUN COTTON/ 20% POLY
- KANGAROO POCKET
- 2 PANEL HOODIE
- 1/2 MOON NECK PATCH FOR RELABELING
- ORIGIN: PAKISTAN



SIZES



COLORS AVAILABLE





STYLE 6003

ADULT CREWNECK

PRODUCT DETAILS

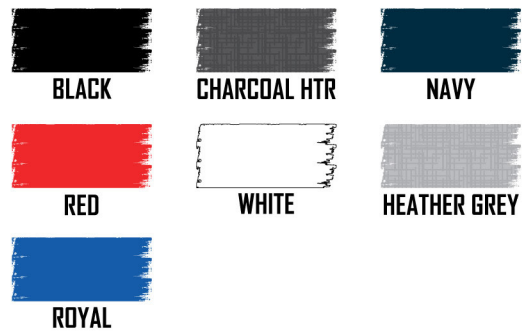
- MID-WEIGHT FLEECE
- 7.8 OZ / 270 GSM FABRIC
- 80% RING-SPUN COTTON/ 20% POLY
- TEAR AWAY LABEL
- 1/2 MOON NECK PATCH FOR RELABELING
- ORIGIN: PAKISTAN



SIZES



COLORS AVAILABLE





STYLE 6601

ADULT COMFORT JOGGER



PRODUCT DETAILS

- MID WEIGHT FLEECE
- 7.8 OZ / 270 GSM FABRIC
- 2 FRONT POCKETS
- 1 BACK POCKET
- 80% RING-SPUN COTTON/ 20% POLY
- RIBBED ELASTIC FLAT WAISTBAND
- CUFF RIBBED ANKLES
- TEAR AWAY LABEL
- ORIGIN: PAKISTAN

SIZES



COLORS AVAILABLE





FLEECE COLLECTION

STYLE 5050

WOMEN'S CROPPED HOODIE

PRODUCT DETAILS

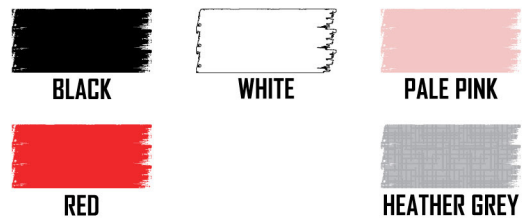
- MID-WEIGHT FLEECE
- 7.8 OZ / 270 GSM FABRIC
- MATCHING FLAT DRAWCORD
- TEAR AWAY LABEL
- 80% RING-SPUN COTTON / 20% POLY
- 2 PANEL HOODIE
- ORIGIN: PAKISTAN

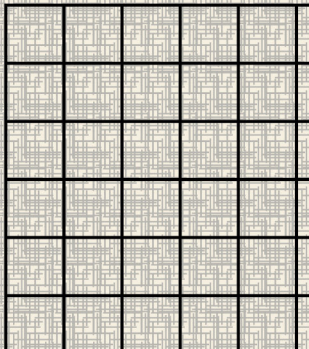


SIZES



COLORS AVAILABLE





YOUTH'S
PICK





YOUTH'S PICK

STYLE 3001

YOUTH HOODIE

PRODUCT DETAILS

- MID-WEIGHT FLEECE
- 7.8 OZ / 270 GSM FABRIC
- 80% RING-SPUN COTTON/ 20% POLY
- TEAR AWAY LABEL
- 2 PANEL HOODIE
- KANGAROO POCKET
- ORIGIN: PAKISTAN



SIZES



COLORS AVAILABLE





YOUTH'S PICK

STYLE 3002

YOUTH ZIPPER HOODIE

PRODUCT DETAILS

- MID-WEIGHT FLEECE
- 7.8 OZ / 270 GSM FABRIC
- 80% RING-SPUN COTTON/ 20% POLY
- TEAR AWAY LABEL
- 2 PANEL HOODIE
- KANGAROO POCKET
- MATCHING ZIPPER
- ORIGIN: PAKISTAN



SIZES



COLORS AVAILABLE





YOUTH'S PICK

STYLE 3006

YOUTH JOGGER

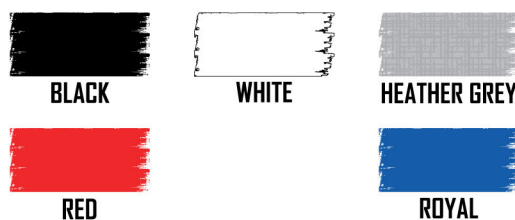
PRODUCT DETAILS

- MID-WEIGHT FLEECE
- 7.8 OZ / 270 GSM FABRIC
- 80% RING-SPUN COTTON/ 20% POLY
- TEAR AWAY LABEL
- 2 FRONT POCKETS
- 1 BACK POCKET
- ELASTIC WAISTBAND
- MATCHING FLAT DRAWCORD
- RIBBED ANKLE CUFFS
- ORIGIN: PAKISTAN

SIZES



COLORS AVAILABLE



STYLE SPECIFICATIONS

STYLE 101 & 101CVC

SIZE	S	M	L	XL	2XL	3XL
CHEST	18	20	22	24	26	28
BODY LENGTH	28	29	30	31	32	33

STYLE 201, 301 & 401

SIZE	S	M	L	XL	2XL	3XL
CHEST	18	20	22	24	26	28
BODY LENGTH	28	29	30	31	32	33

STYLE 201HW & 401 HW

SIZE	S	M	L	XL	2XL	3XL
CHEST	18	20	22	24	26	28
BODY LENGTH	28	29	30	31	32	33

STYLE 5001 & 5002

SIZE	S	M	L	XL	2XL	3XL
CHEST	17	18	19	20	21	22
BODY LENGTH	26	26.5	27	28	29	30

STYLE 6001 & 6002

SIZE	S	M	L	XL	2XL	3XL
CHEST	20	22	24	26	28	30
BODY LENGTH	27	28	29	30	31	32

STYLE 6003 & 6011

SIZE	S	M	L	XL	2XL	3XL
CHEST	20	22	24	26	28	30
BODY LENGTH	27	28	29	30	31	32

STYLE R7001

SIZE	S	M	L	XL	2XL	3XL
CHEST	20	22	24	26	28	30
BODY LENGTH	27	28	29	30	31	32

STYLE 5050

SIZE	S	M	L	XL
CHEST	21	23	25	27
BODY LENGTH	18	19	20	21

STYLE 6601

SIZE	S	M	L	XL	2XL	3XL
WAIST	30	32	34	36	38	40
OUTSEAM	39	40	41	42	43	44
INSEAM	29	30	31	32	33	34

STYLE 3006

SIZE	S	M	L	XL
WAIST	22	24	26	28
OUTSEAM	32	33.5	34.5	37
INSEAM	22.5	23.5	25.25	27



WWW.CENTURYSTYLE.US
469-258-4402

ADDRESS: 28 DECKER CT, WYLIE, TEXAS, 75098